



GIUNTOLI'S FARM

GENERAL INFORMATION

Location of farm	Troia (Foggia, Italy)
Name of the farmer	Santino Giuntoli
Size of farm	100 ha
Permanent staff	3
Main products of farm	Durum wheat, field bean, sunflower, chickpea, small

CURRENT REGENERATIVE AGRICULTURE PRACTICES ON THE FARM

Farmland cultivated with RA practices	All
Crops produced with RA practices	All
Duration of using RA practices	From 2008 to the present



Description of RA practices used in the farm

- *No-tillage*
- *Cover crops*
- *Crop rotation*
- *All the manure produced from the calves is used in the farm*

Regenerative agriculture.
An innovative approach towards mitigation
of climate change through multi-tier learning.



Erasmus+

STARTING AND MOTIVATION BEHIND REGENERATIVE AGRICULTURE

Main motivation	He is an agronomist. In 1977, a Professor held a lesson about the benefits of sod seeding, therefore he was very passionate about it. In the past, he started to apply it very roughly with old machines, but with the new machine for sod seeding he has entirely converted his farm.
Learning the RA farming practices	No
Did the farmer receive training?	Yes
Did the farmer receive financial support?	Yes, he received financial support by the Apulia region



RESULTS OF REGENERATIVE AGRICULTURE

Benefits of using RA practices

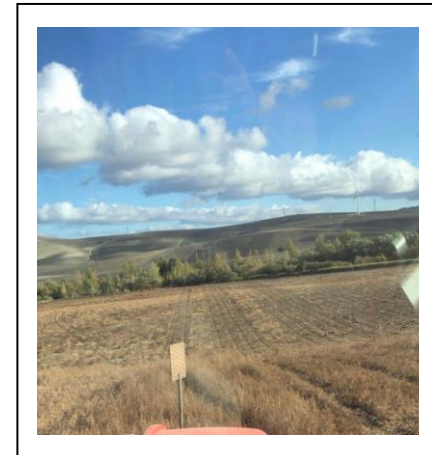
The most important benefits he observed are the increase of grain yield, better soil fertility, especially in terms of nitrogen content and organic matter content.

Obstacles of using RA practices

The infestation of ryegrass was the main obstacle, but he is using some decision supporting systems for avoiding weed infestation and other problems



Is the farmer happy overall with RA?	Yes
Does the farmer intend to continue RA?	Yes
Does the farmer intend to introduce changes in RA methods or crops?	He is very proud of the present methods he is applying and doesn't want to introduce new changes



Regenerative agriculture.
An innovative approach towards mitigation
of climate change through multi-tier learning.

